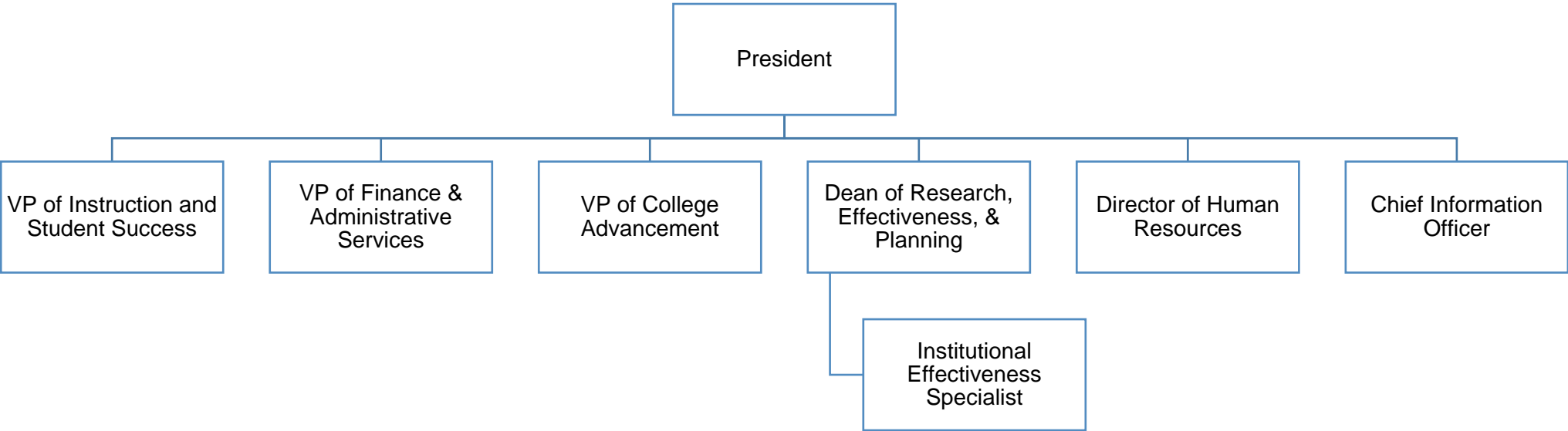


Organization Chart



LEGEND:

(G) = Glenns Campus

(W) = Warsaw Campus

(KG) = King George Campus

(NK) = New Kent

All Numeric = Classified Staff

FA = Administrative Faculty

F = Faculty

W = Wage

R = Restricted Classified Staff

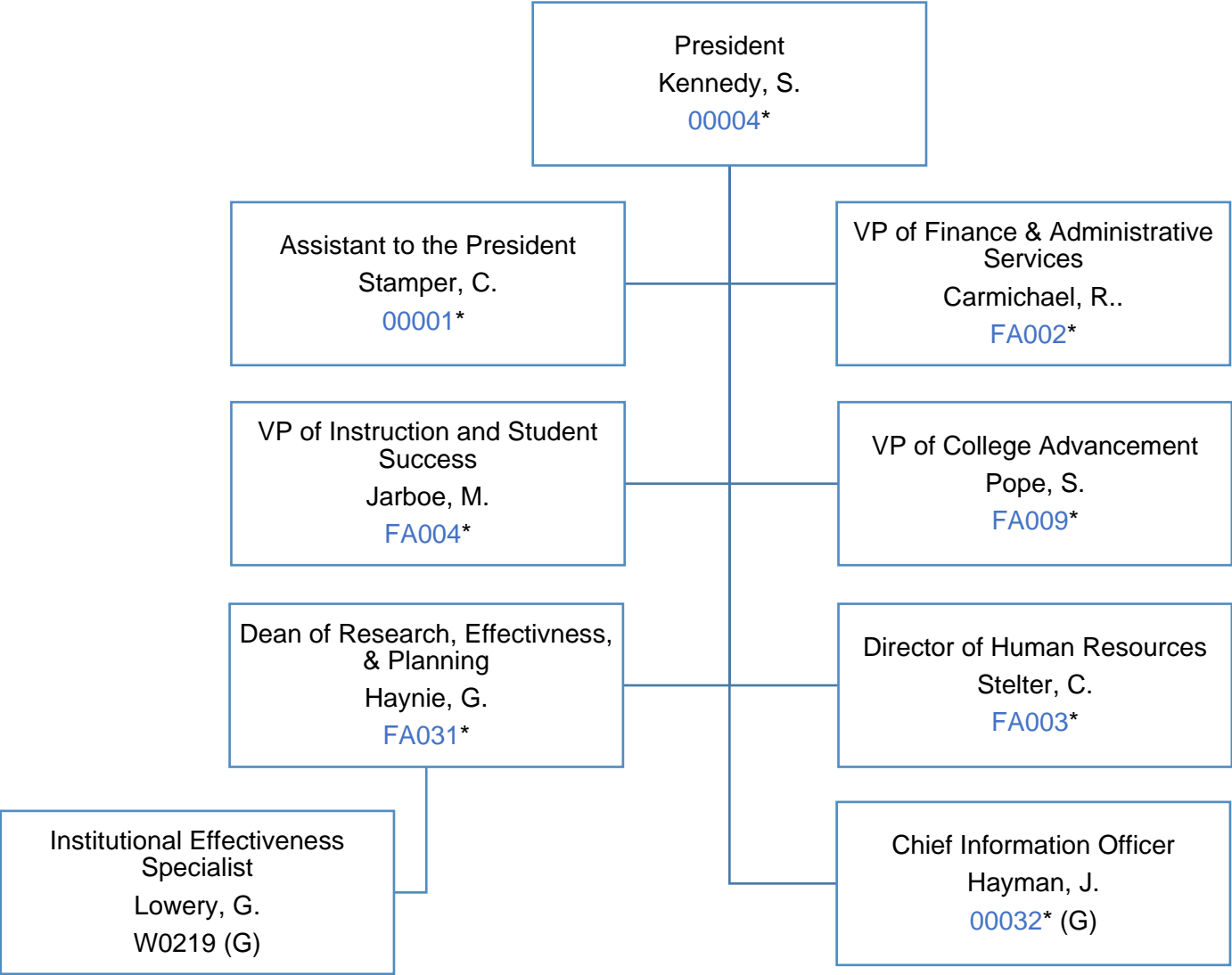
GA = Grant Funded A&P Faculty

RF = Restricted Faculty

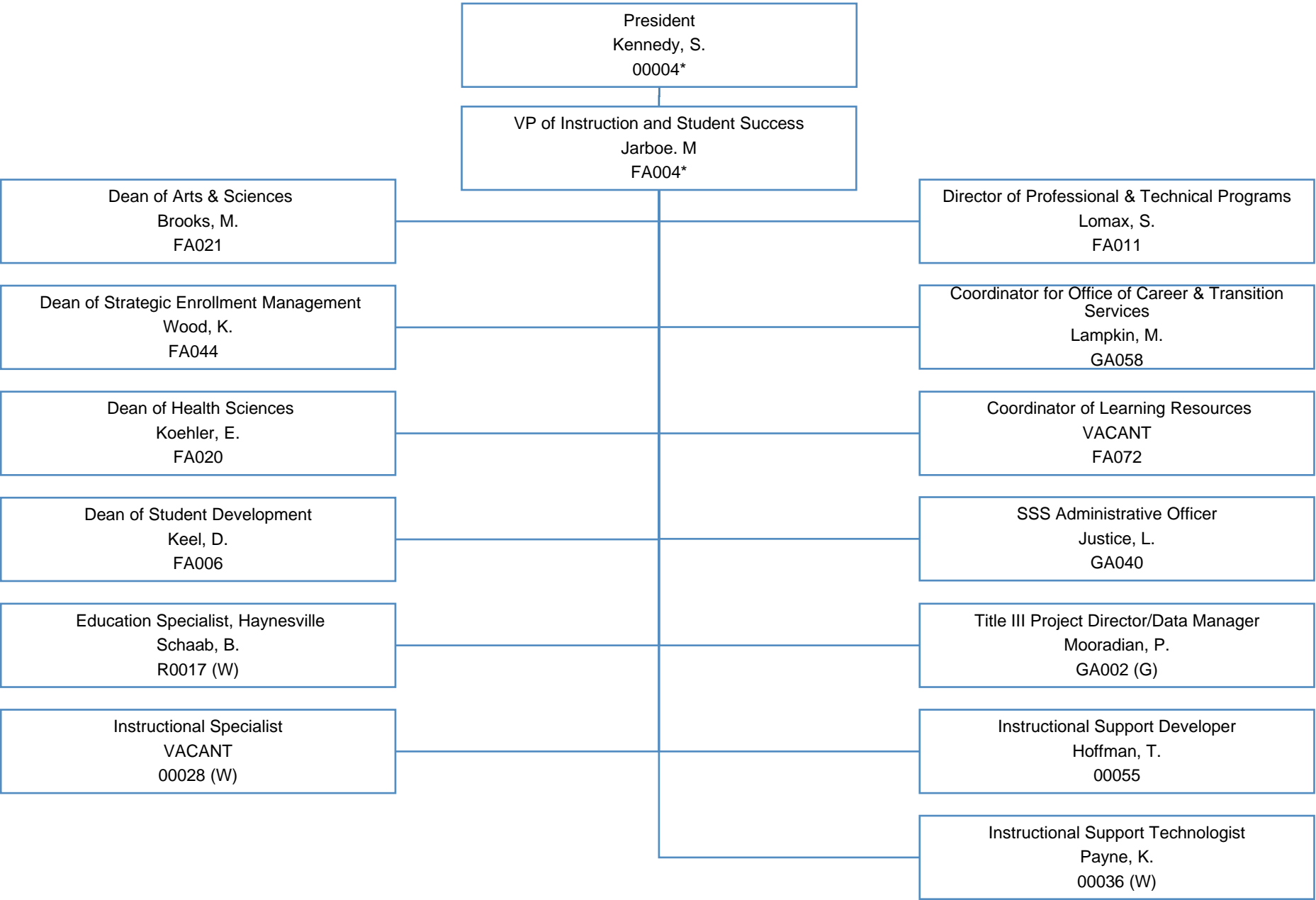
Position Numbers in Blue =
Administrative Council

* = Executive Staff

President



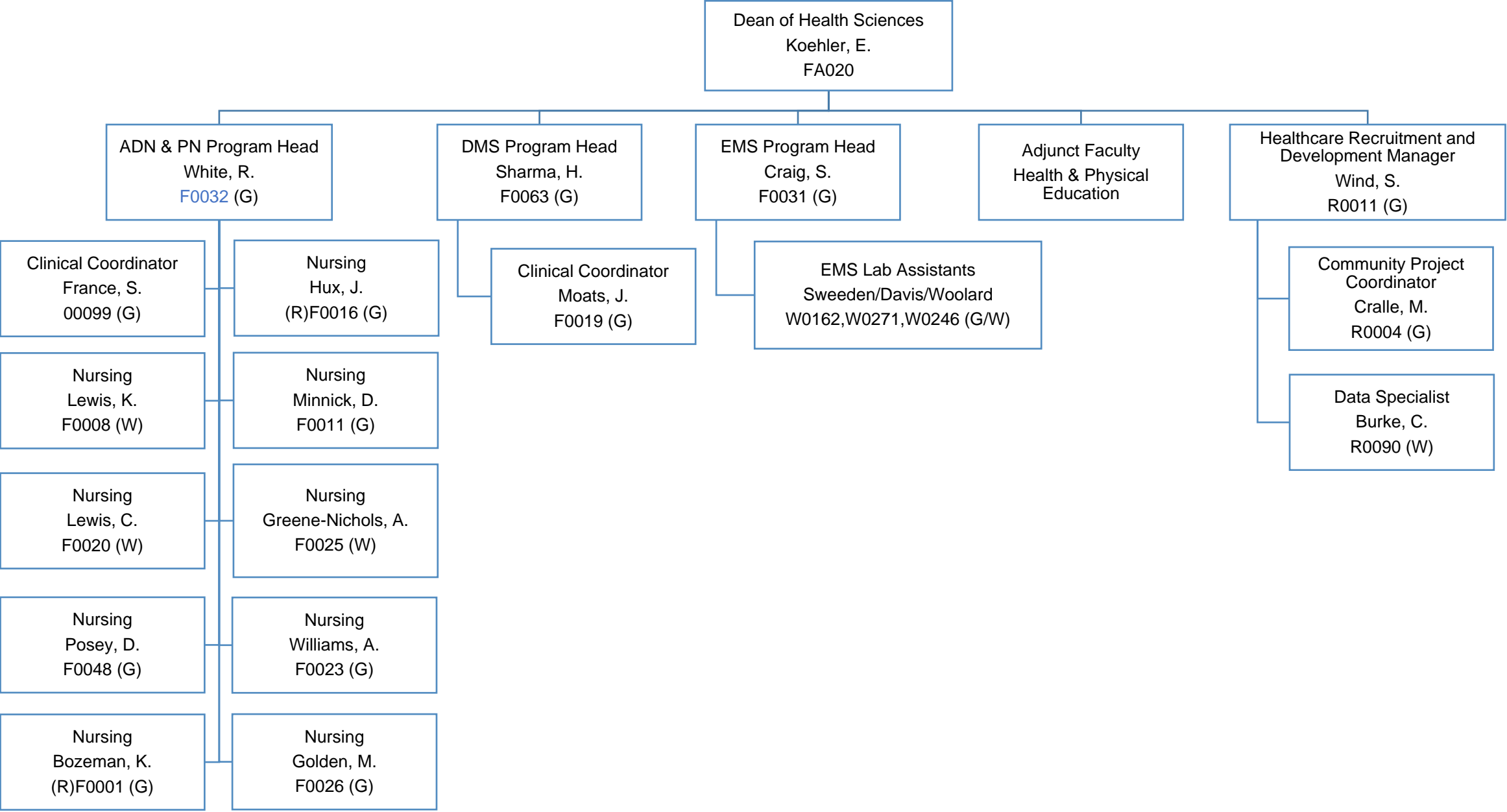
VP of Instruction and Student Success



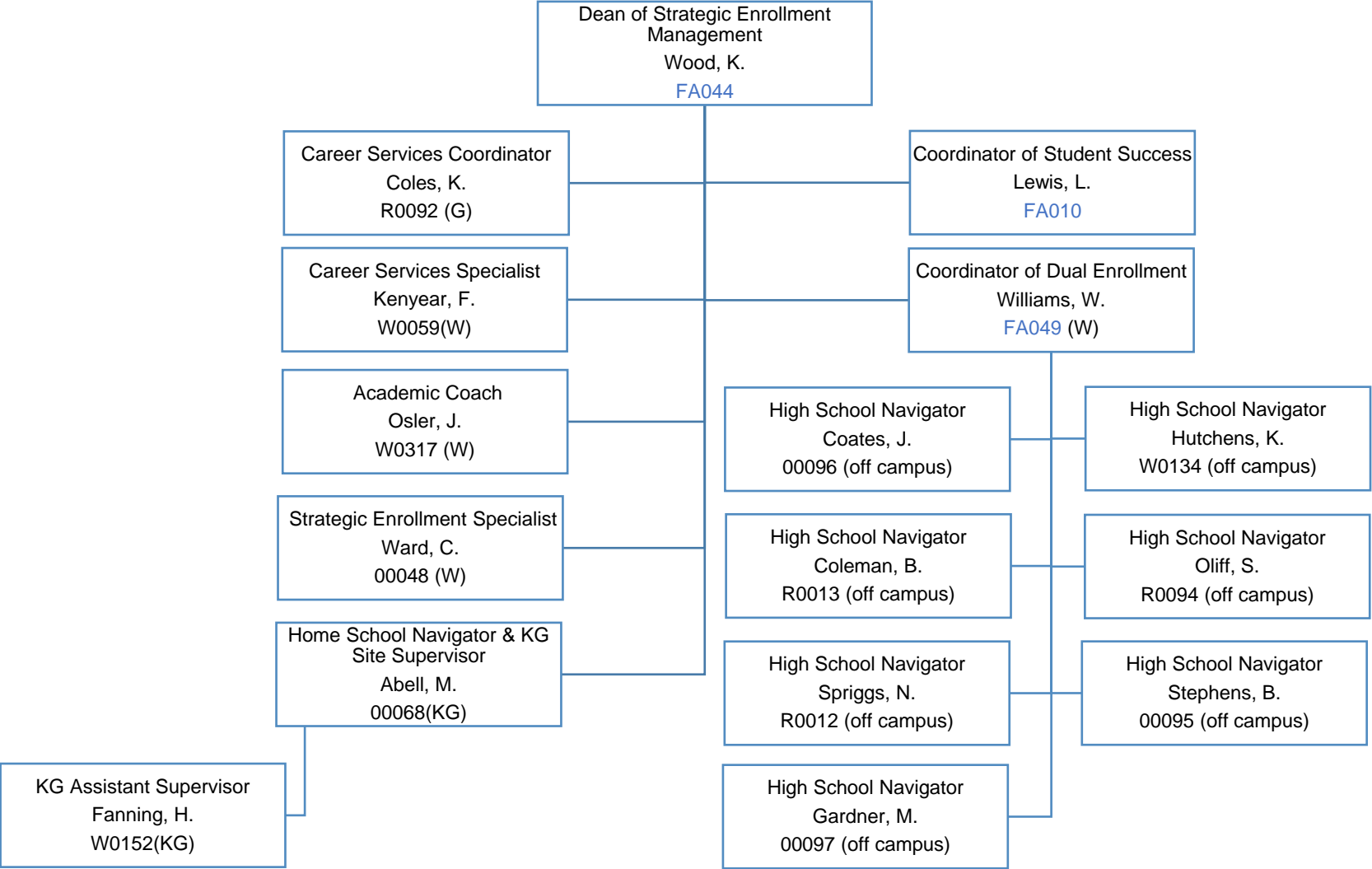
Dean of Arts and Sciences

Dean of Arts and Sciences Brooks, M. FA021 (G)		
Psychology Hill, L. F0007 (W)		Natural Sciences Dunston, Jones, Tuckey, Little, J. F0009/F0047/F0041/F0014 (W/G)
Physical Sciences Adhikari, L. F0044 (W)		English Dinquel, Little, Newhouse F0036/F0010/F0012 (G/W)
Mathematics Bhattarai, Bhandari, Caterisano, Nelson F0043/F0042/F0034/F0022 (W/G)		History Brent,Tassone F0064/F0035 (W/G)
Adjunct Faculty Education, Languages, Speech & Humanities		Math Lab Assistants VACANT W0000/W0000 (G/W)
Faculty Support Secialist King, J. 00010 (W)		Science Lab Assistants Evans, R./Moses, K. W0180/W0145 (G/W)

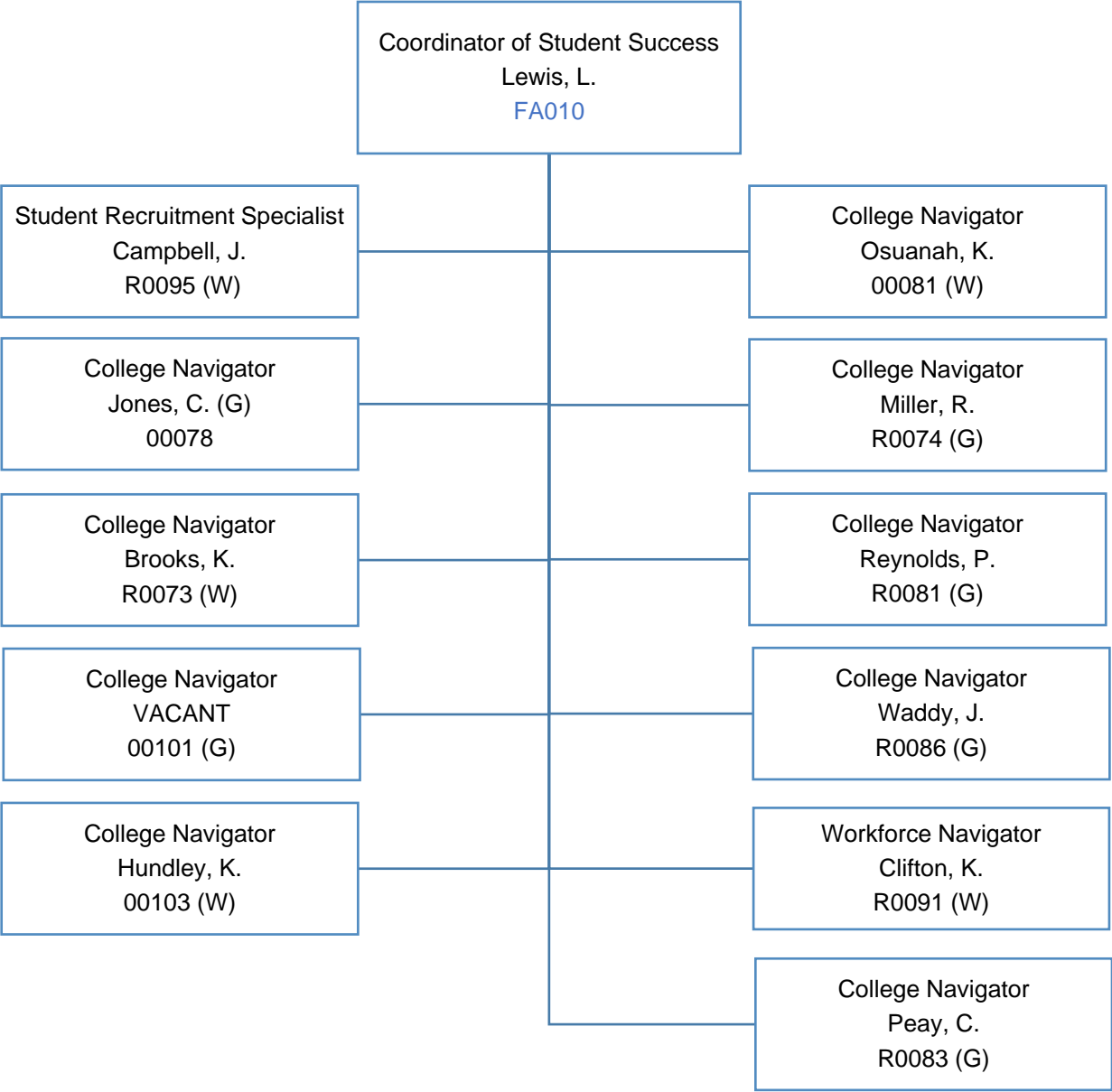
Dean of Health Sciences



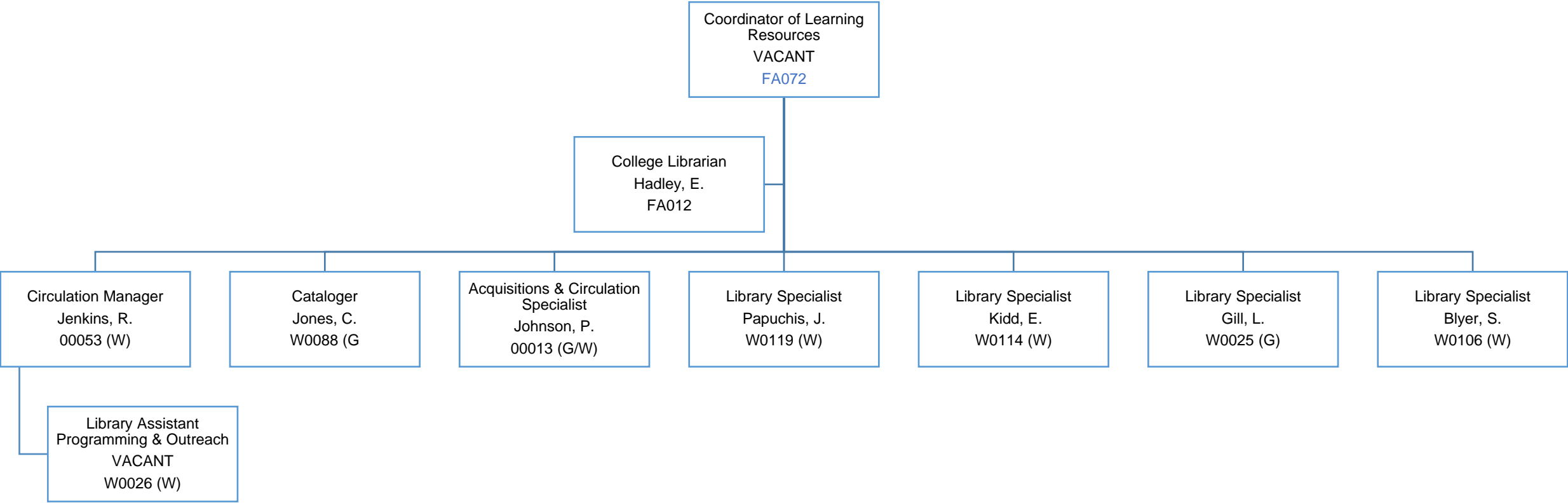
Dean of Strategic Enrollment Management



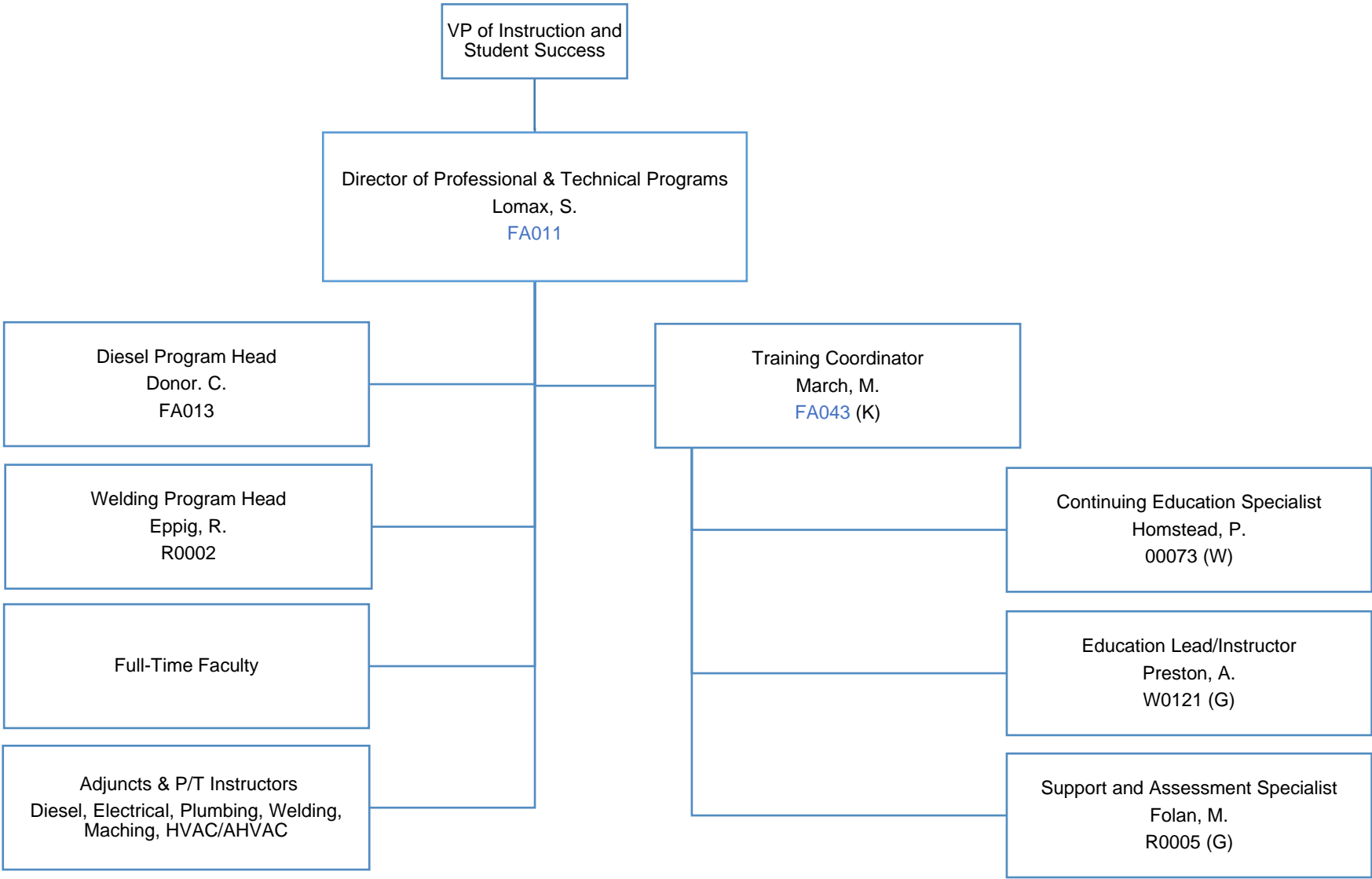
Dean of Strategic Enrollment Management; Advising Team



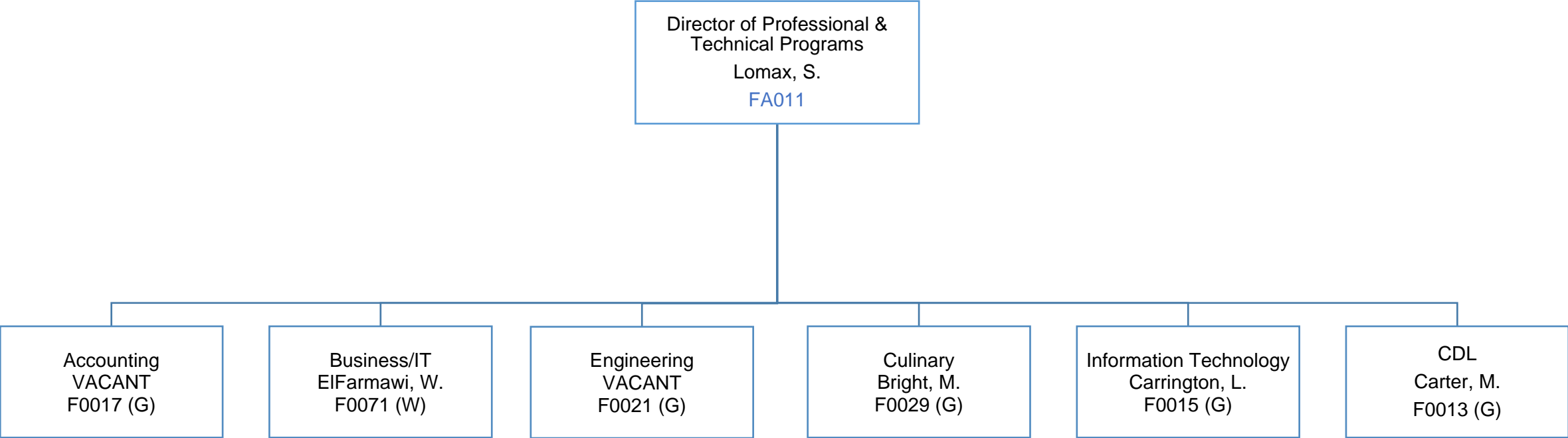
Coordinator of Learning Resources



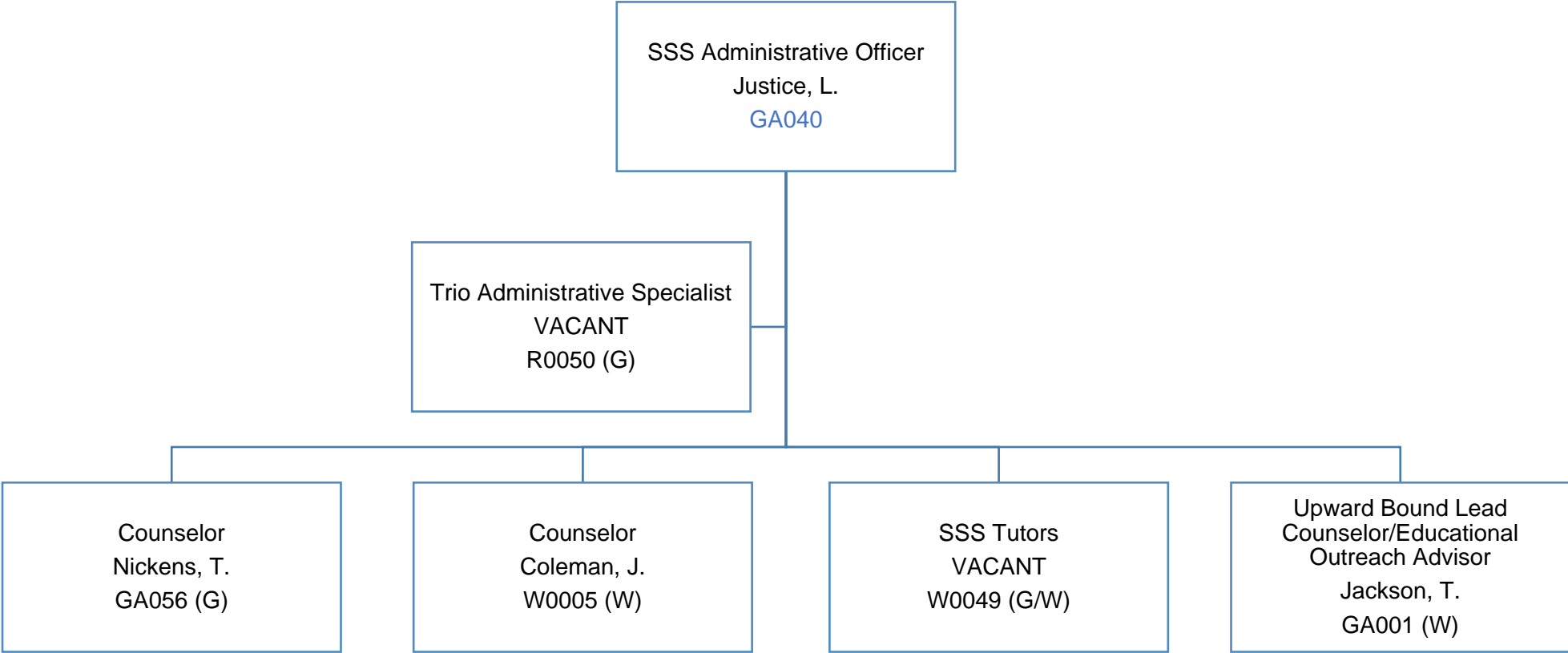
VP of Instruction and Student Success; Director of Professional & Technical Programs



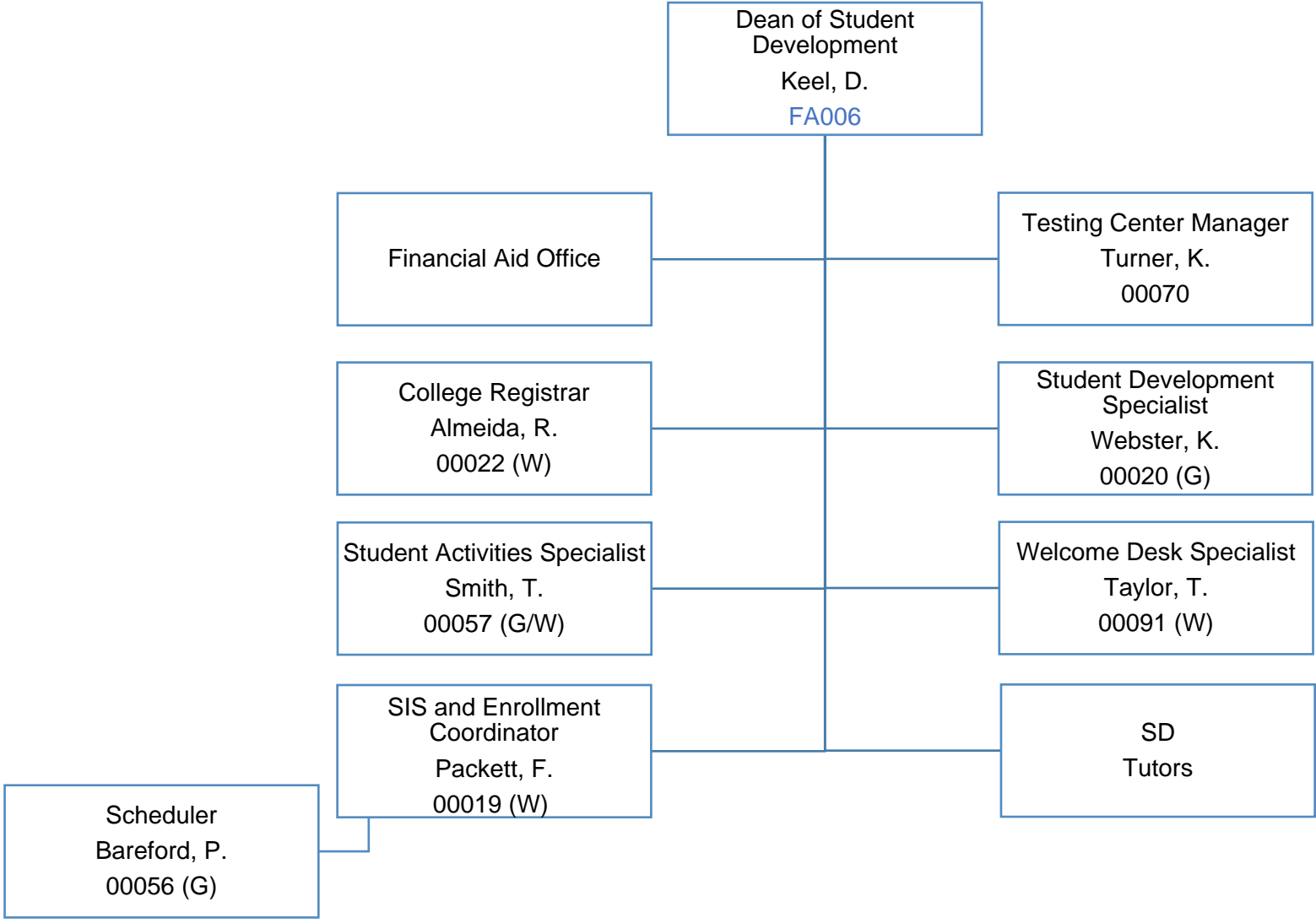
Director of Professional & Technical Programs; F/T Faculty



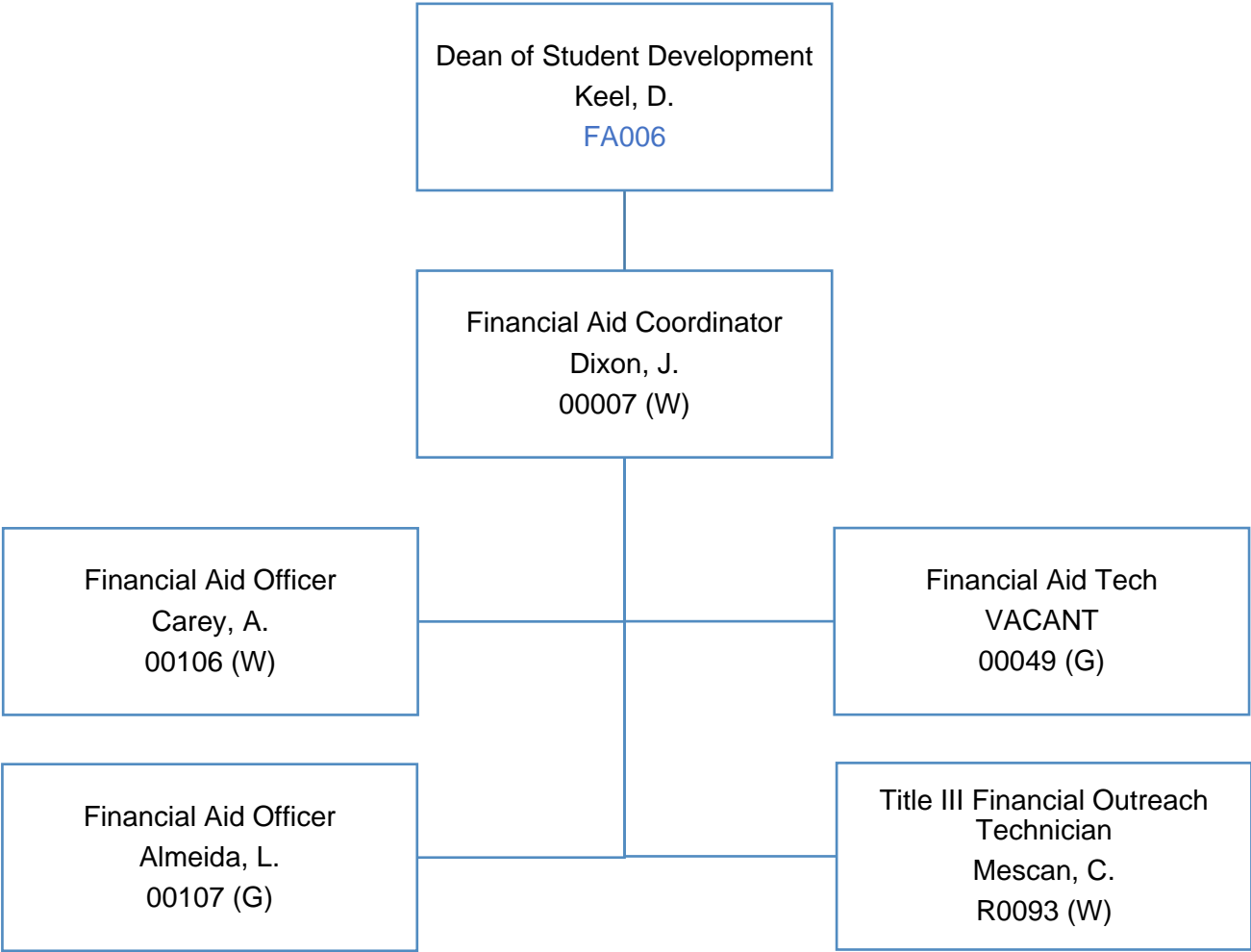
VP of Instruction and Student Success; Student Support Services



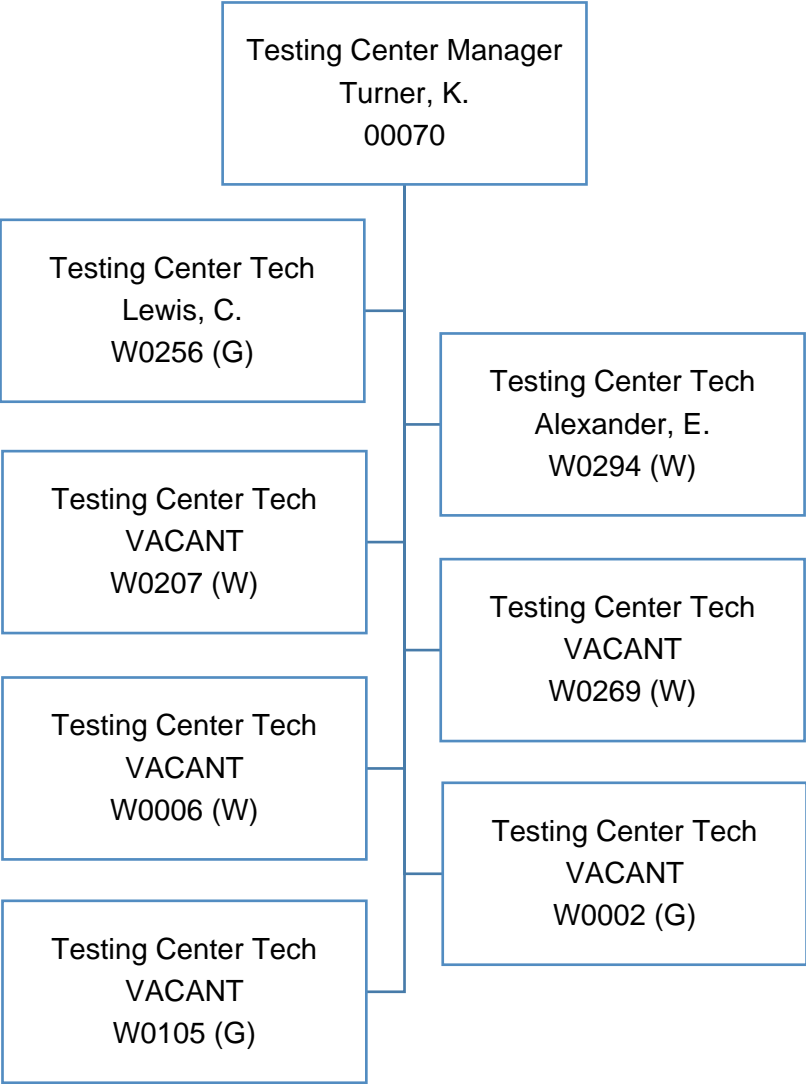
VP of Instruction and Student Success; Dean of Student Development



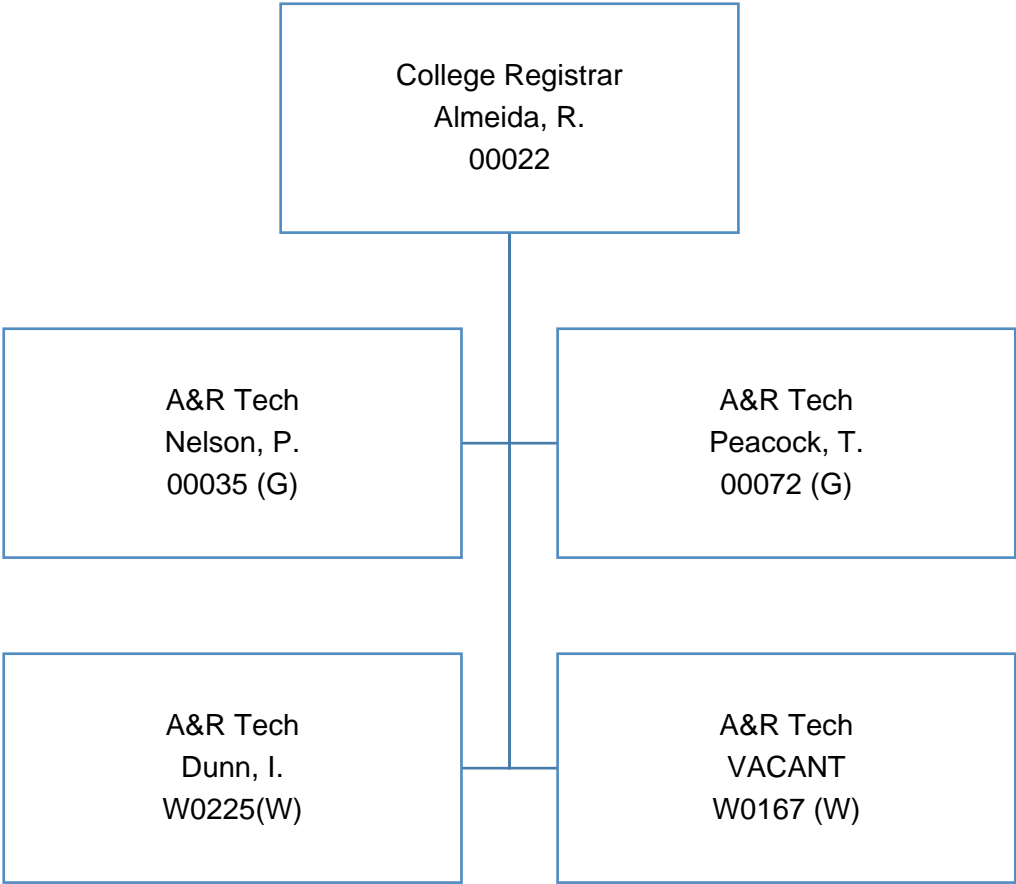
Dean of Student Development; Financial Aid



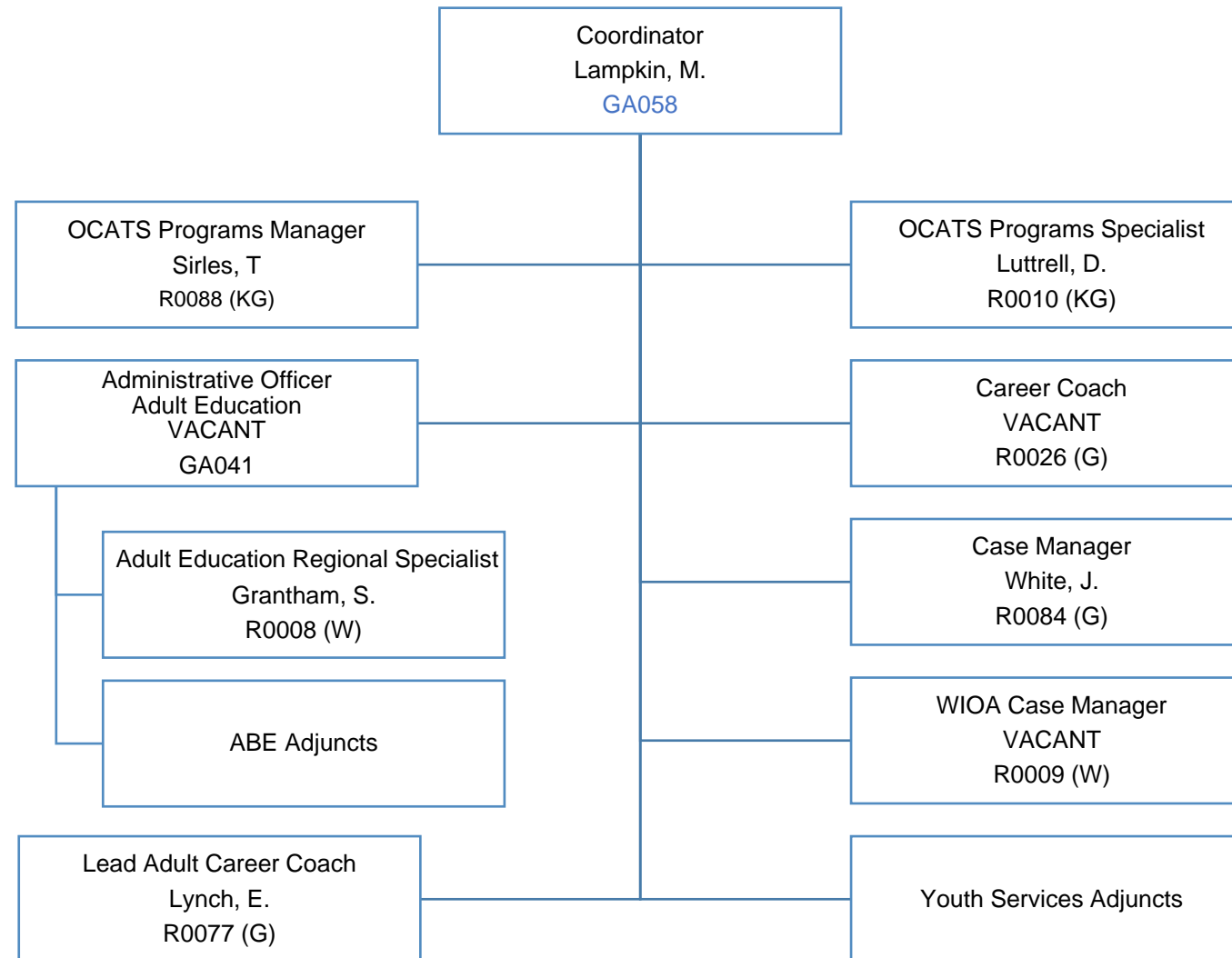
Dean of Student Development; Testing Center



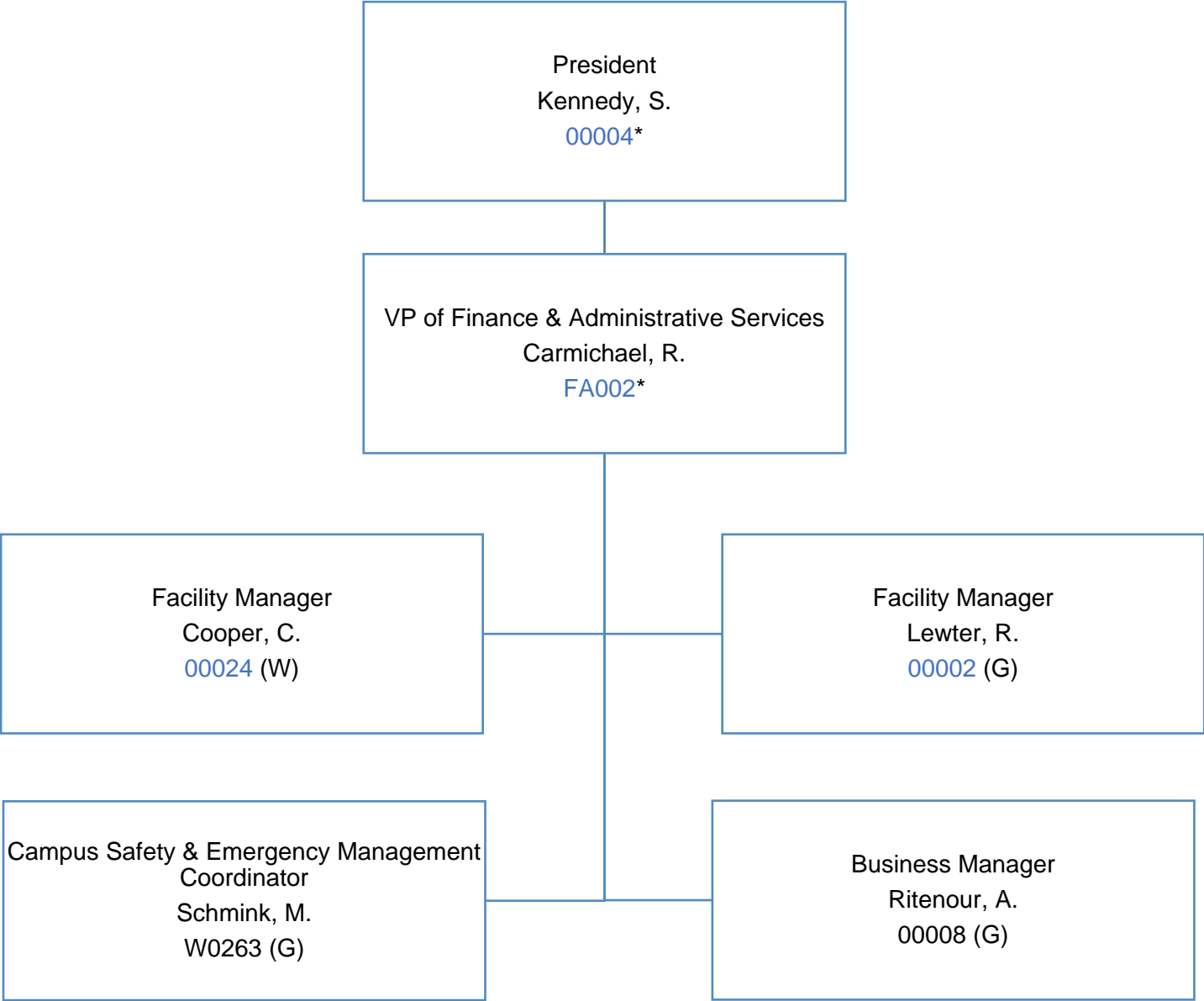
Dean of Student Development; Admissions and Records



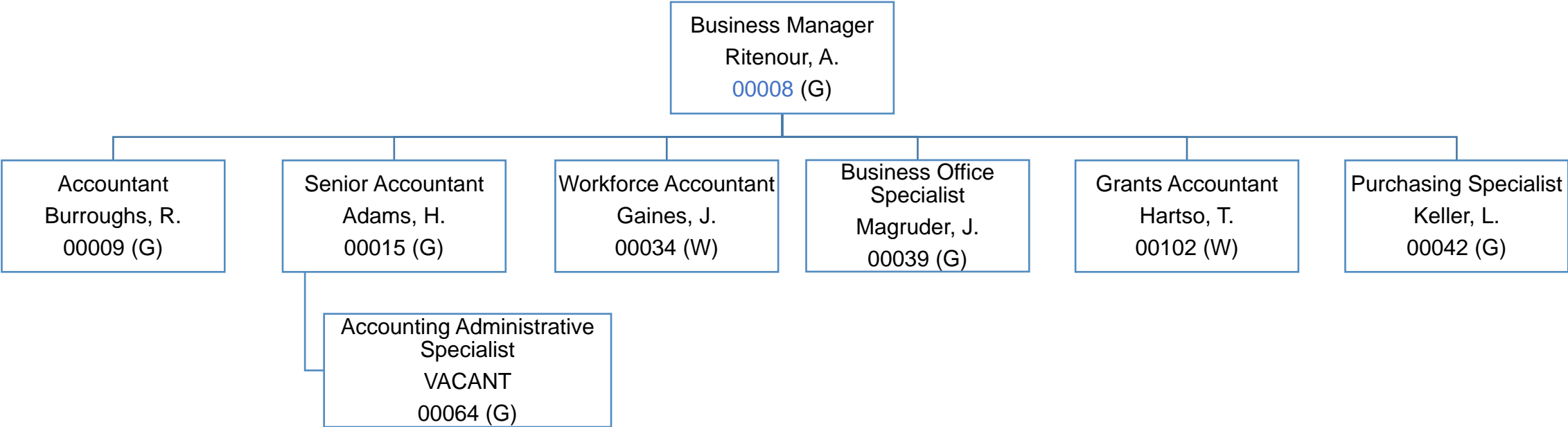
VP of Instruction and Student Success; Office of Career & Transition Services



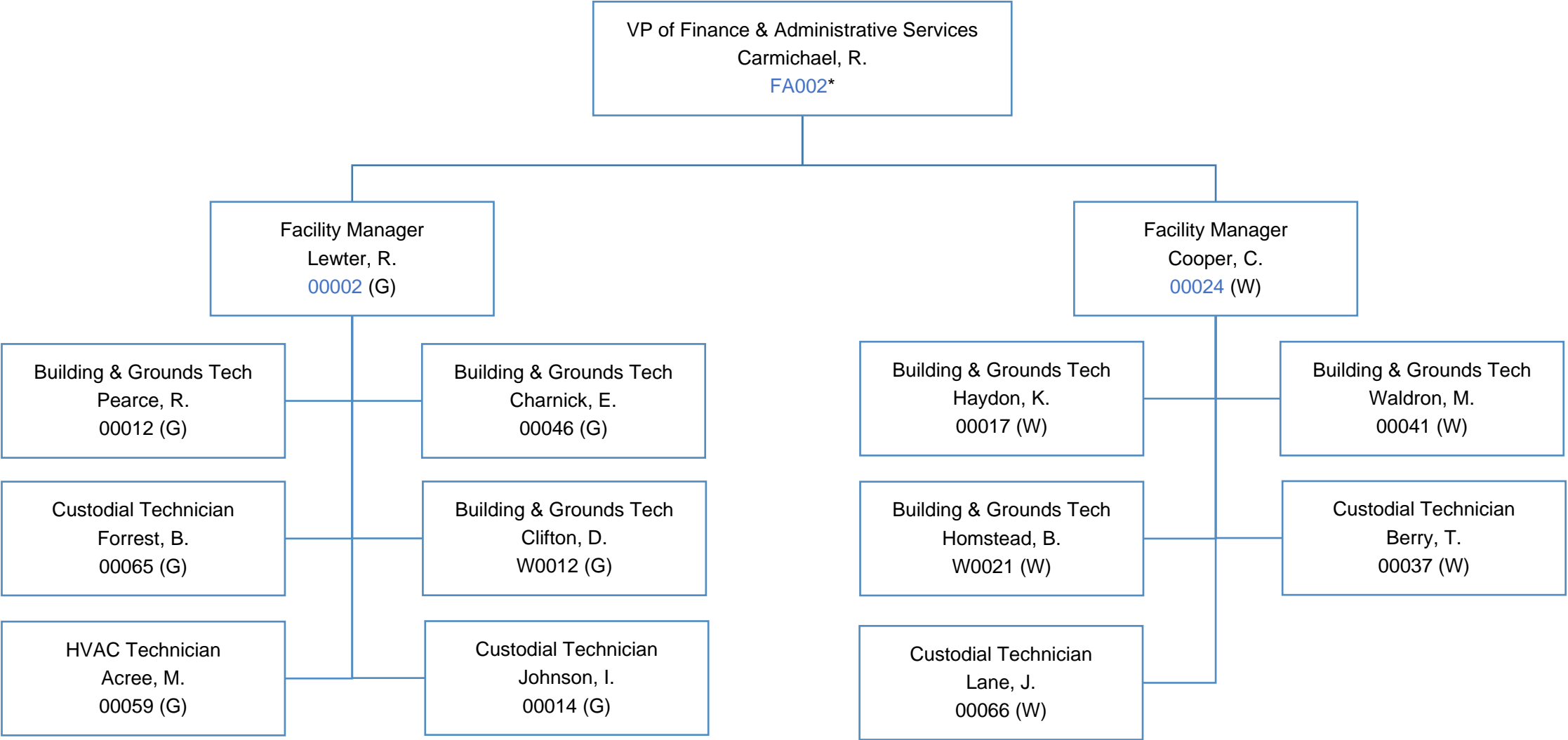
VP of Finance & Administrative Services



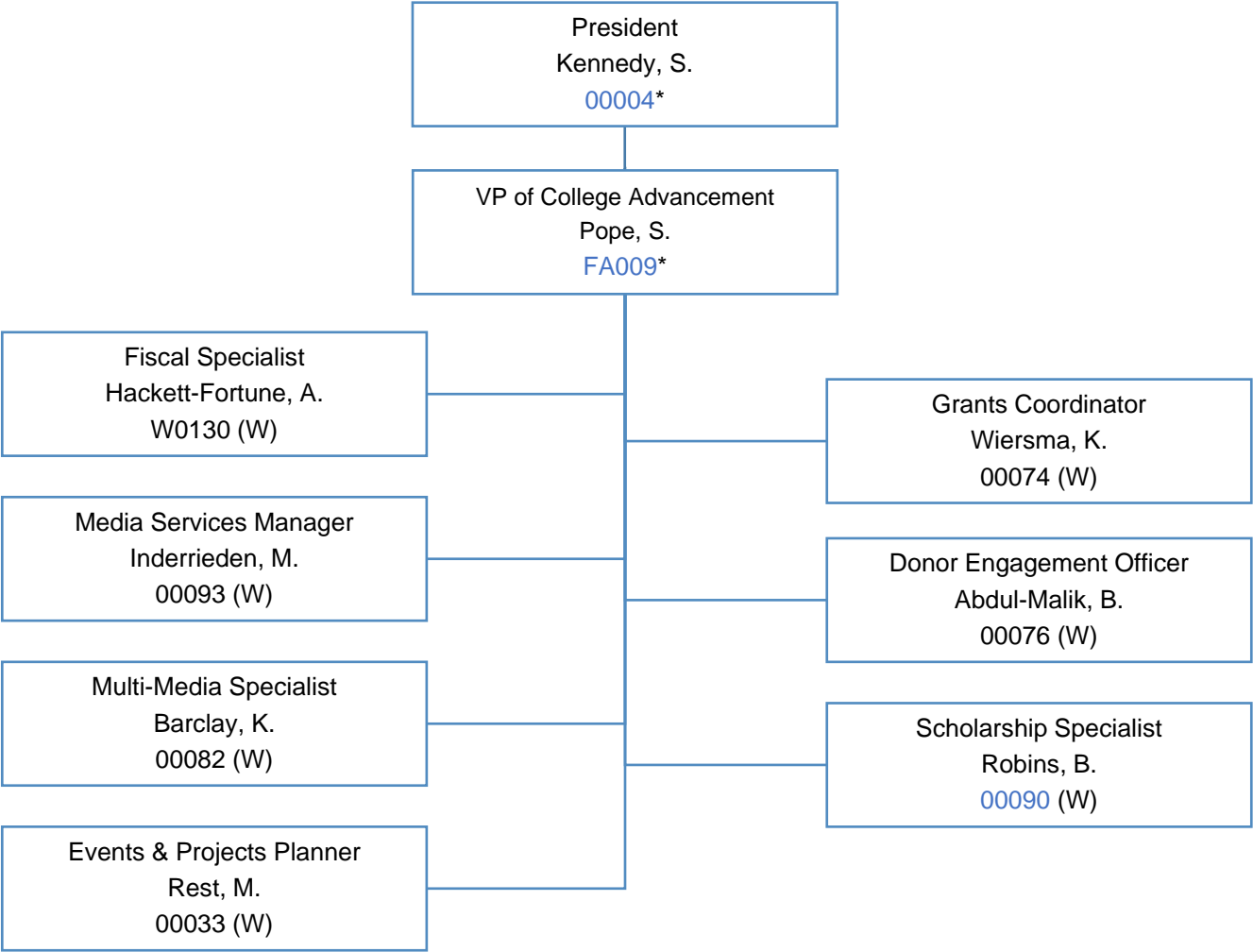
VP of Finance & Administrative Services; Business Office



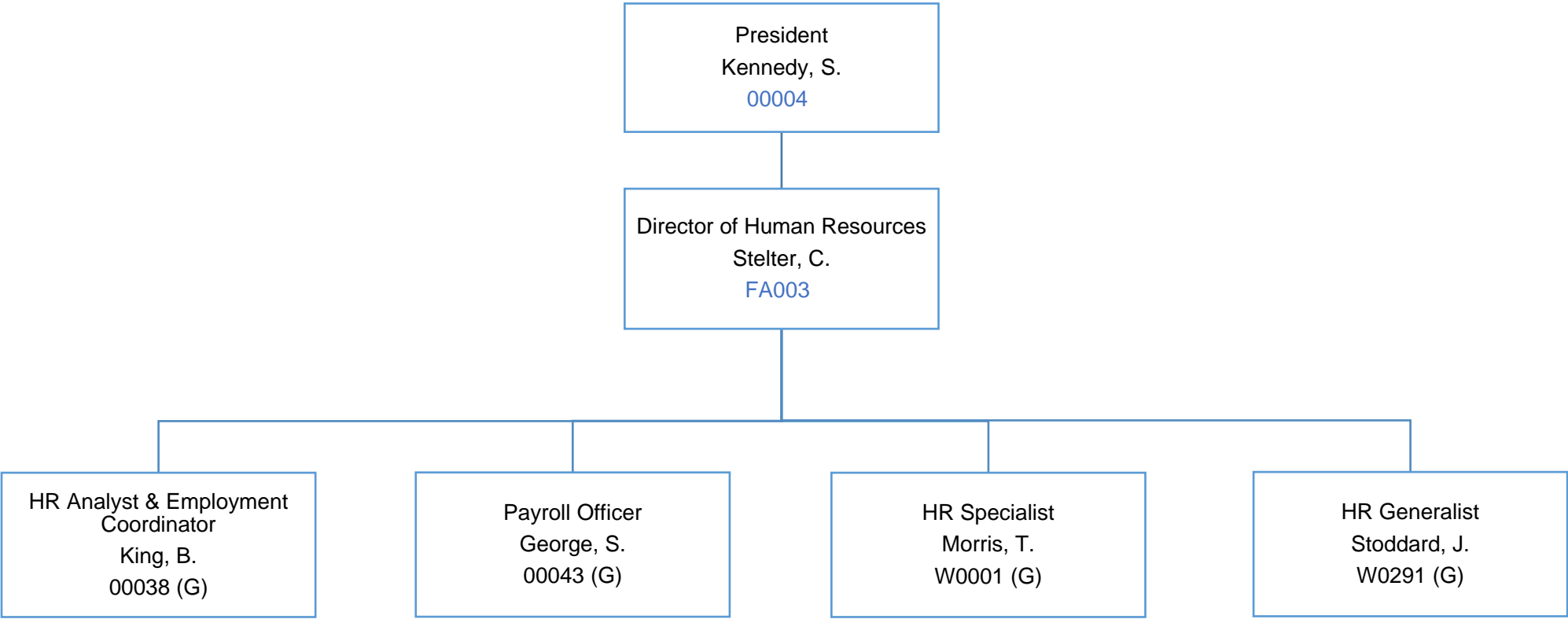
VP of Finance & Administrative Services; Facilities



VP College Advancement



Office of the President; Human Resources



Office of the President; Technology

